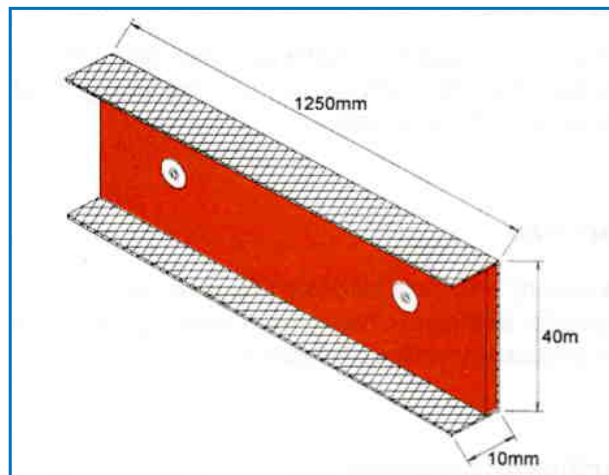




## Sealmaster Cavity Fire Seal

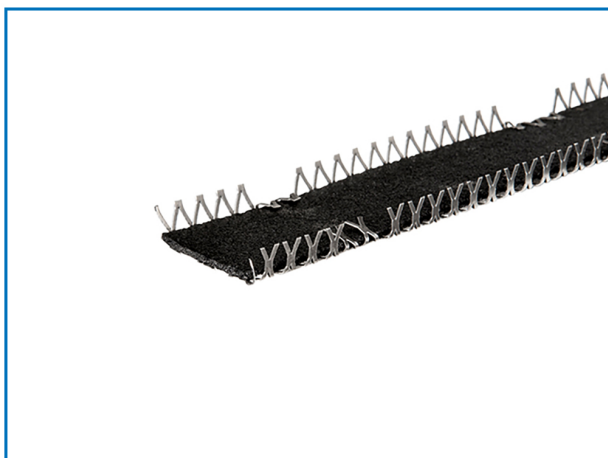
### Introduction

The last few years has seen a massive increase in the number of timber framed buildings being constructed, especially those over single story in height. These timber framed constructions require an uninterrupted, fully ventilated cavity between inner and outer walls to ensure that rot and fungus are avoided and the timbers remain undamaged. However, in multi-storey buildings, this cavity poses a significant fire hazard and can act as a chimney, spreading fire and smoke throughout the structure very quickly.



### The Product

The Sealmaster cavity fire seal (CFS) allows for full ventilation and drainage, is impervious to moisture and other atmospheric containments as well as providing fire integrity for periods in excess of 60 minutes. The seal comprises of a length of our unique flexible graphite based intumescent materials, set into a stainless steel carier system. This results in both the materials and their fixings being fully resistant to water, damp, humidity, heat, cold and even frost.



### Application

The CFS is suitable for use in cavities from 20-50mm wide, in all timbered framed constructions. It may be used in a horizontal or vertical plane, i.e. at floor level or around window apertures. It is mounted directly to the inner cavity wall or on a splayed, treated softwood batten, if necessary, to provide a clear gap of 10mm between the seal and cavity outer wall. This batten may be continuous or interrupted by vertical battens, as needed.

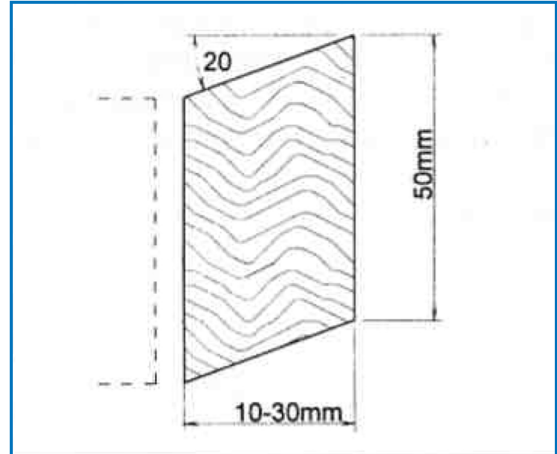
The batten should be fixed through to the structure with 75mm galvanised nails at 250mm centres, staggered top to bottom, the seal is then fixed directly to the batten with 30mm galvanised nails, staggered at 150mm centres. Care should be taken to ensure that joints in the batten and cavity fire seal and/or fixings do not coincide. The cavity fire seal does not require any intumescent mastic to joint or to bed against, nor does it require and paint or other protective coatings.



## Sealmaster Cavity Fire Seal

### Technical Information

- Product Code:** CFS  
**Size:** 40 X 10mm - Supplied in 1250mm lengths  
**Colour:** Black/Natural  
**Cavity Size:** 20 - 50mm  
**Batten:** 50mm high, 20 splay, 10-30mm wide, preservative treated softwood.  
**Fixings:** Galvanised steel clout head nails  
Batten to structure - 75mm  
Seal to batten - 30mm

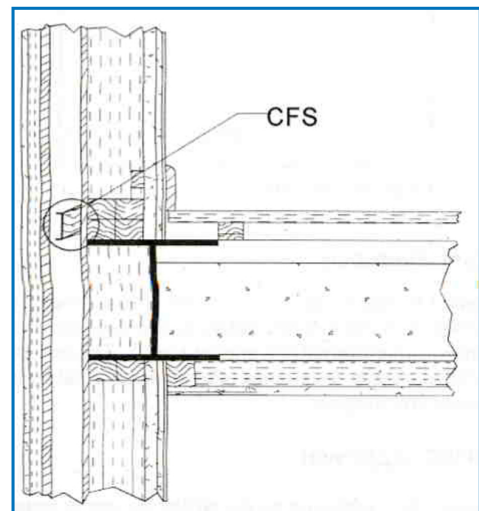


**Components:** Stainless steel mesh, stainless steel rivets, graphite based intumescent material.

**Moisture resistance:** The CFS is unaffected by atmospheric carbon dioxide or moisture. Even after undergoing total submersion in water, and then being subjected to freezing conditions, CFS activates reliably at designated temperature.

**Fire resistance:** In excess of 60 minutes when installed in accordance with manufacturer's instructions.

**Safety:** Care should be taken when handling/ installing the CFS as there may be sharp edges to the stainless steel carrier. The intumescent material is odourless, non-toxic and is asbestos free. No further Health & Safety issues apply.



### NHBC Approval

The CFS is approved by the NHBC for use in timber framed constructions, as detailed in this datasheet.

### Test Evidence

Tested to BSEN1363 Part 1: 1999 (replacement for BS476 Part 22) and witnessed by representatives of Chiltern International Fire and the NHBC. The test was terminated after 69 minutes without failure. Test report available on request.